

# TRAVEL AGENCY BOOKING TRENDS

FEBRUARY 21, 2022



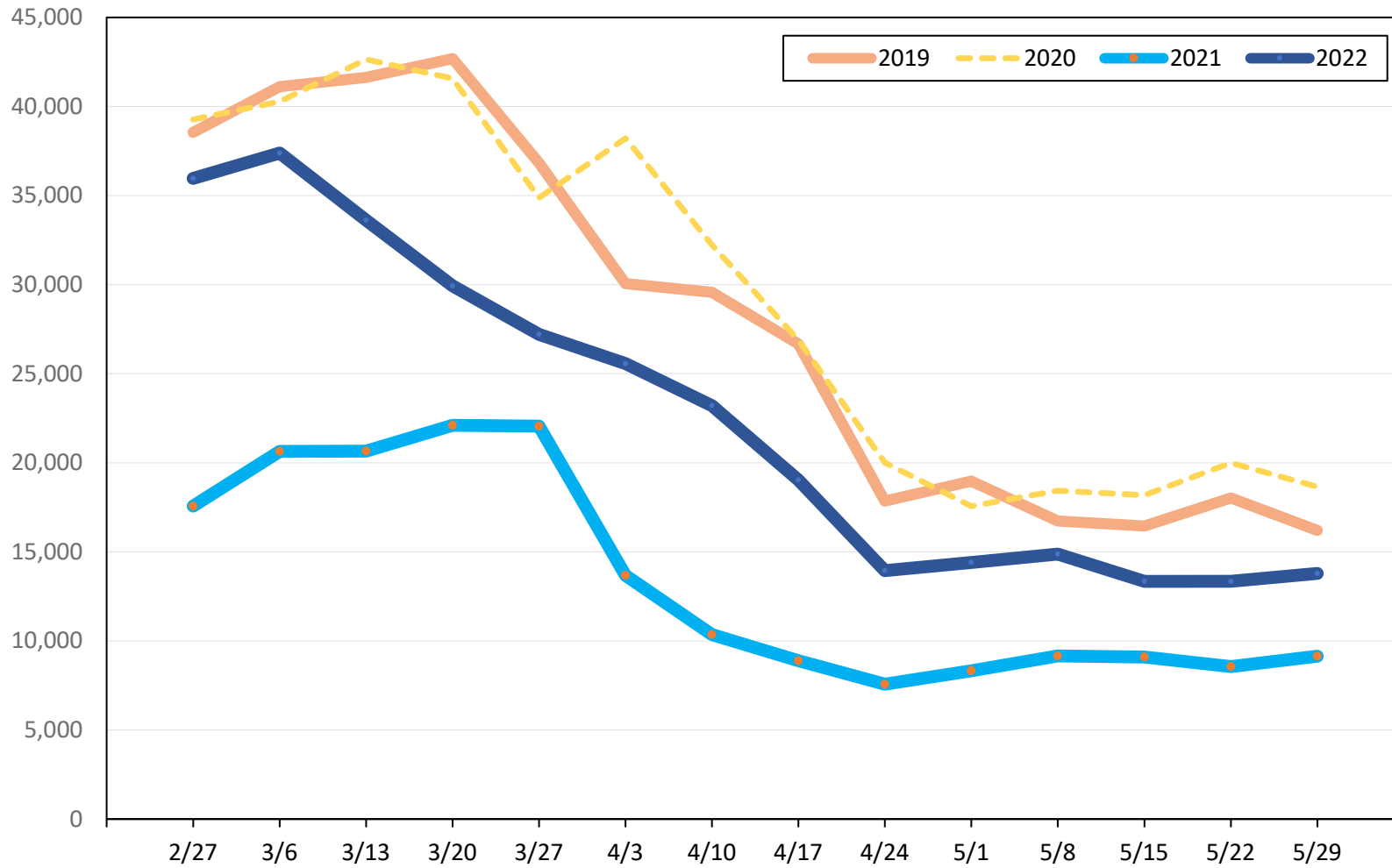
# Global Agency Pro

- HTA subscribes to Global Agency Pro, an online travel distribution system consisting of Travel Agency data.
- Global Agency Pro provides access to over 90% of the world's Travel Agency airline transactions.
- The database consists of five years of historical ticketing data and one year of advance purchase data.
- The information is updated daily with a recency of two days prior to current date.

# Global Agency Pro Index

- **Bookings**
  - Net sum of the number of visitors (i.e., excluding Hawai'i residents and inter-island travelers) from Sales transactions counted, including Exchanges and Refunds.
- **Booking Date**
  - The date on which the ticket was purchased by the passenger. Also known as the Sales Date.
- **Travel Date**
  - The date on which travel is expected to take place.
- **Point of Origin Country**
  - The country which contains the airport at which the ticket started.
- **Travel Agency**
  - Travel Agency associated with the ticket is doing business (DBA).

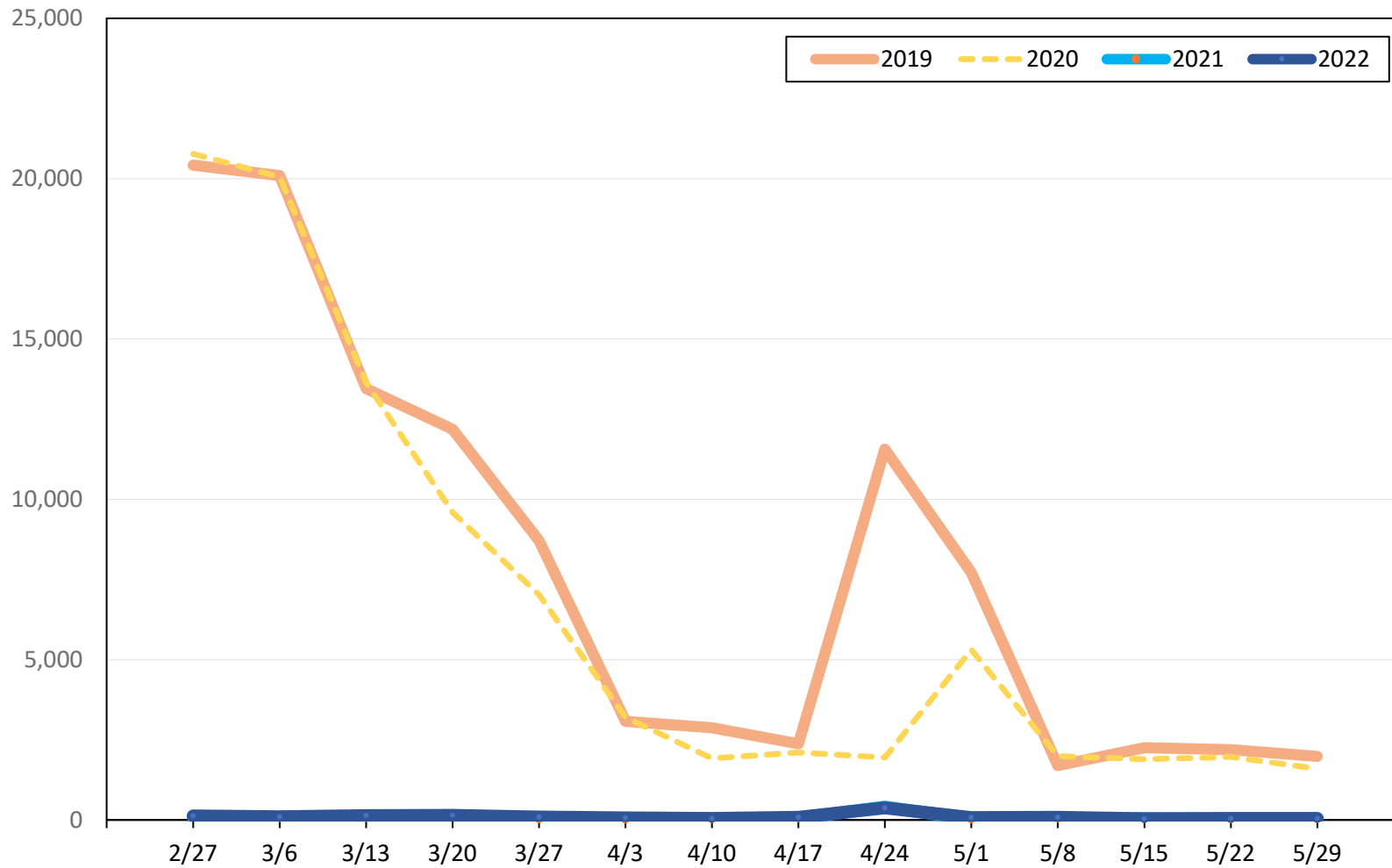
## Travel Agency Weekly Bookings for Future Travel to Hawai'i as of February 19, 2022 U.S.



Source: Global Agency Pro, as of February 19, 2022

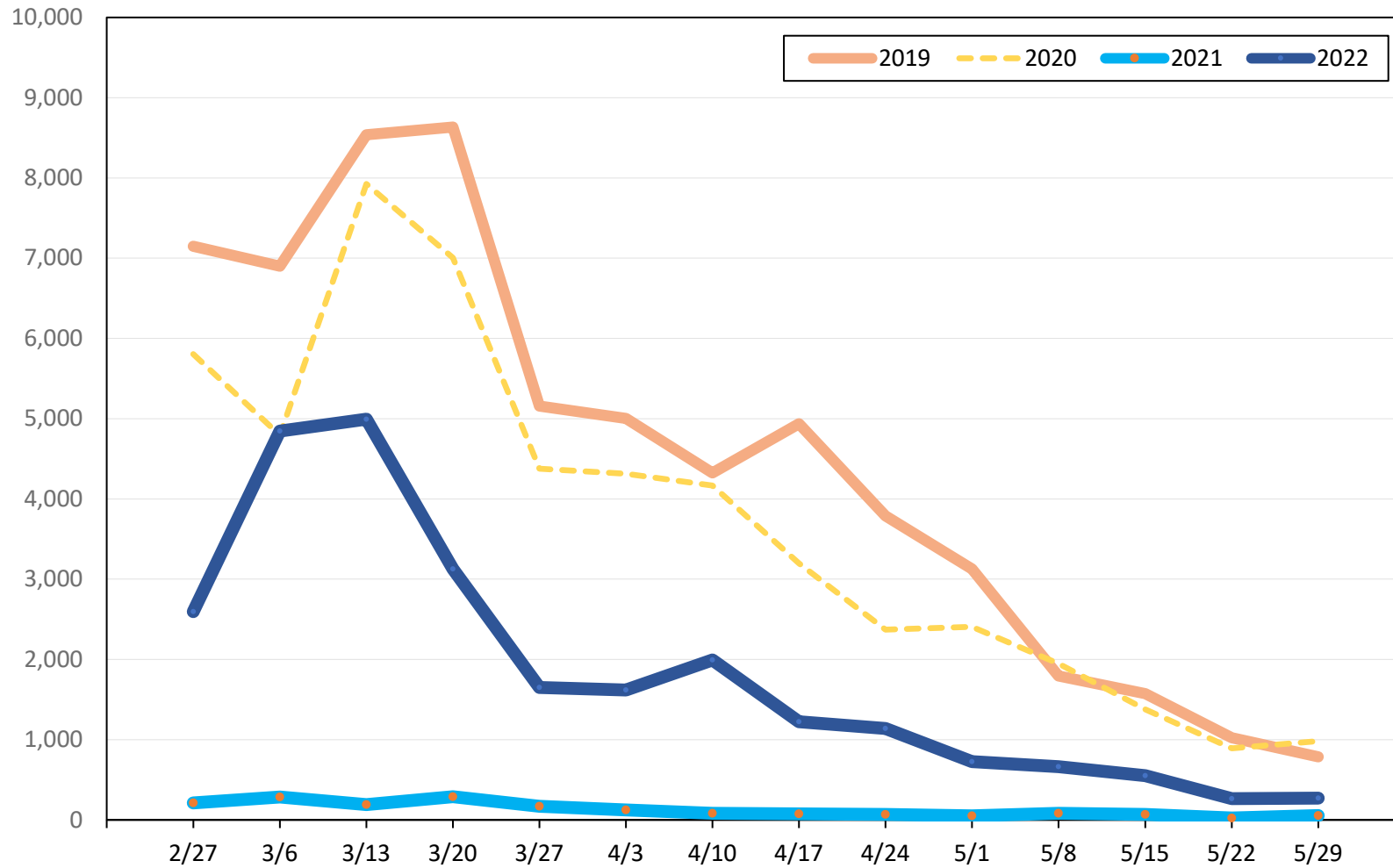
# Travel Agency Weekly Bookings for Future Travel to Hawai'i as of February 19, 2022

## Japan



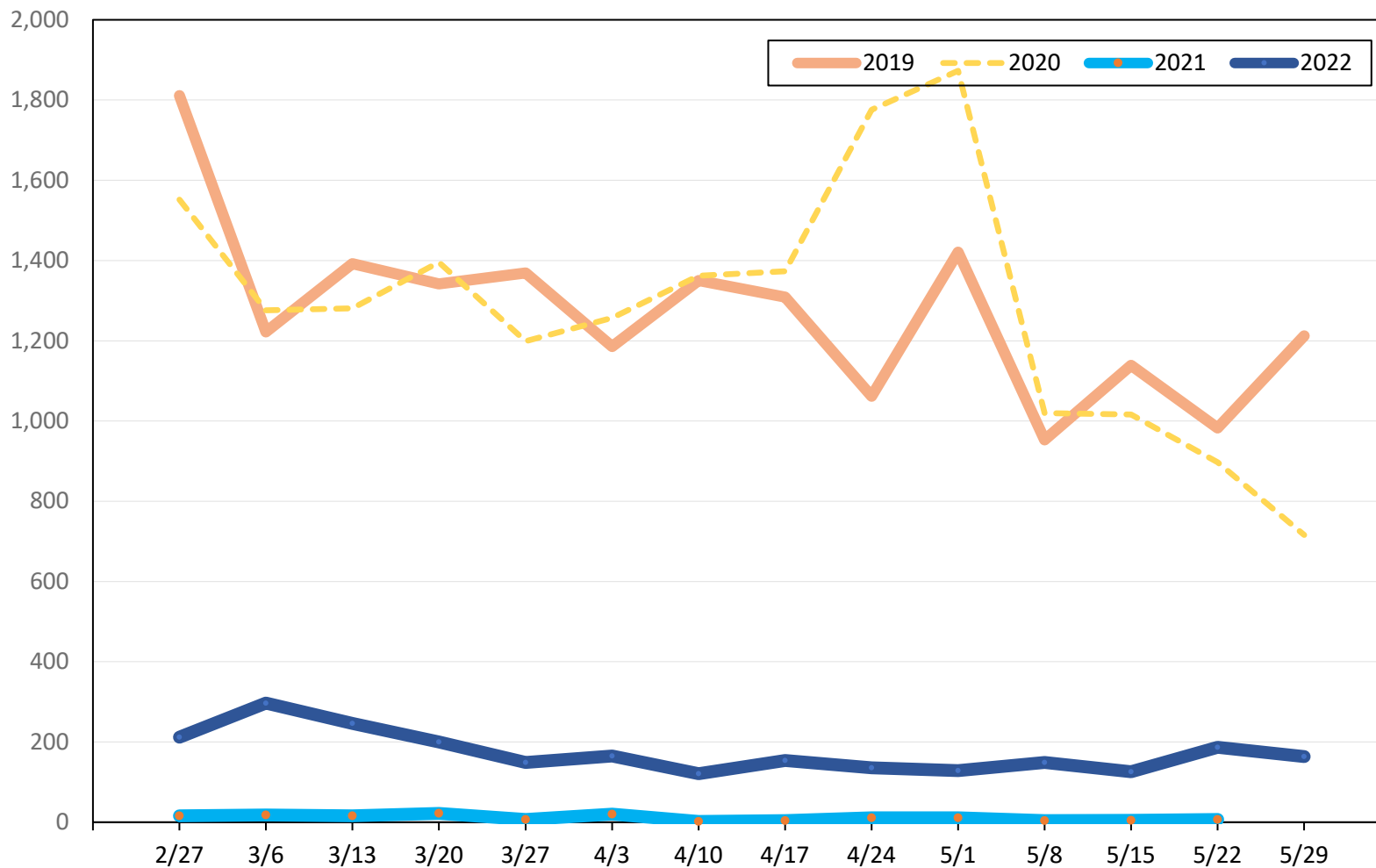
Source: Global Agency Pro, as of February 19, 2022

## Travel Agency Weekly Bookings for Future Travel to Hawai'i as of February 19, 2022 Canada



Source: Global Agency Pro, as of February 19, 2022

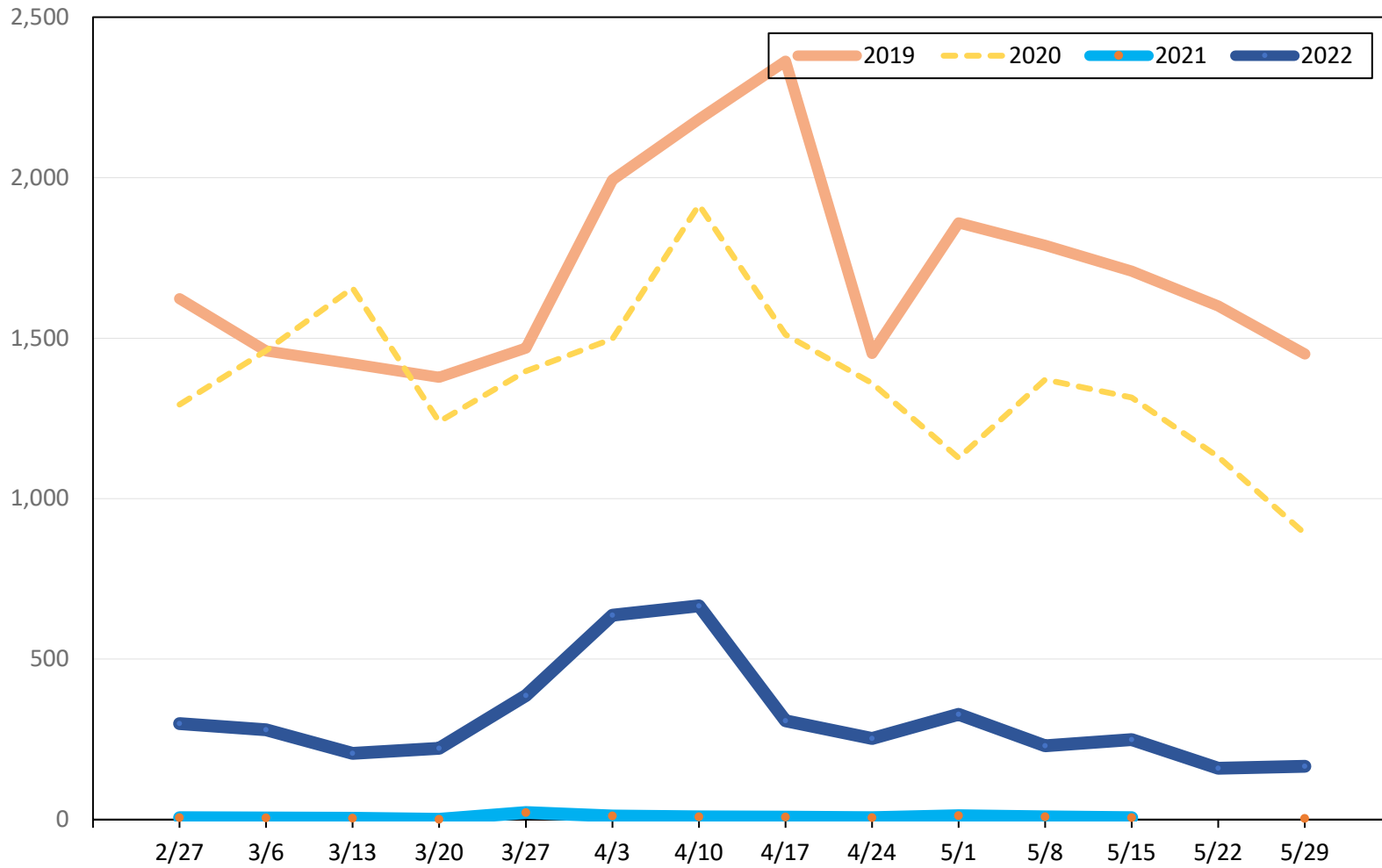
## Travel Agency Weekly Bookings for Future Travel to Hawai'i as of February 19, 2022 Korea



Source: Global Agency Pro, as of February 19, 2022

# Travel Agency Weekly Bookings for Future Travel to Hawai'i as of February 19, 2022

## Australia



Source: Global Agency Pro, as of February 19, 2022